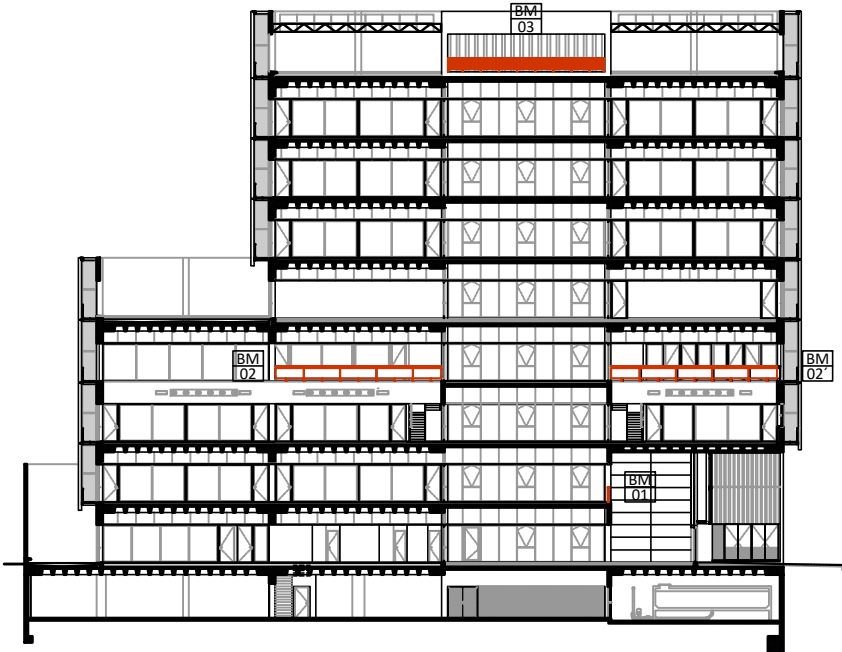
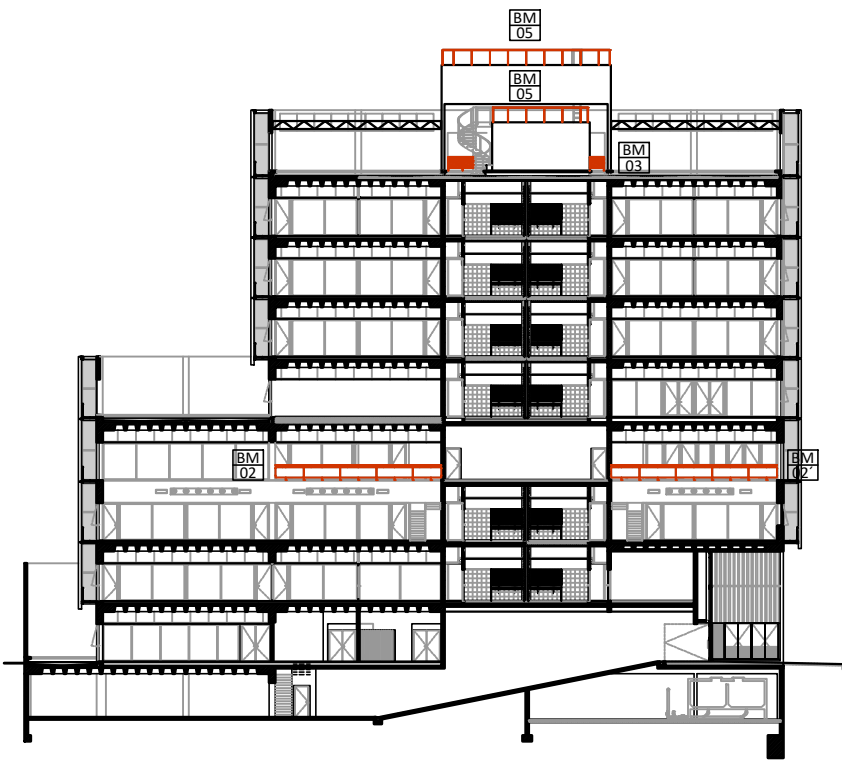
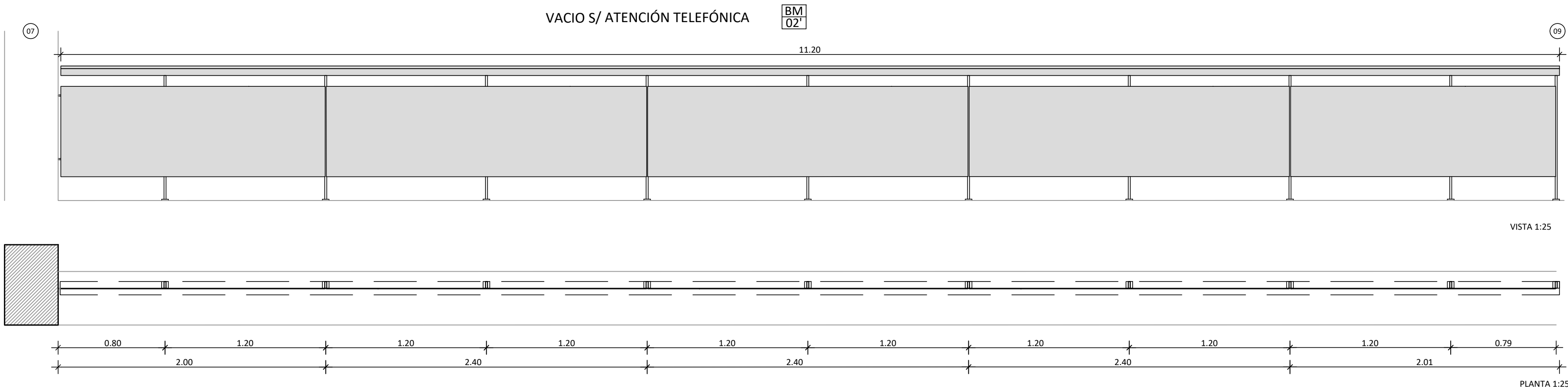
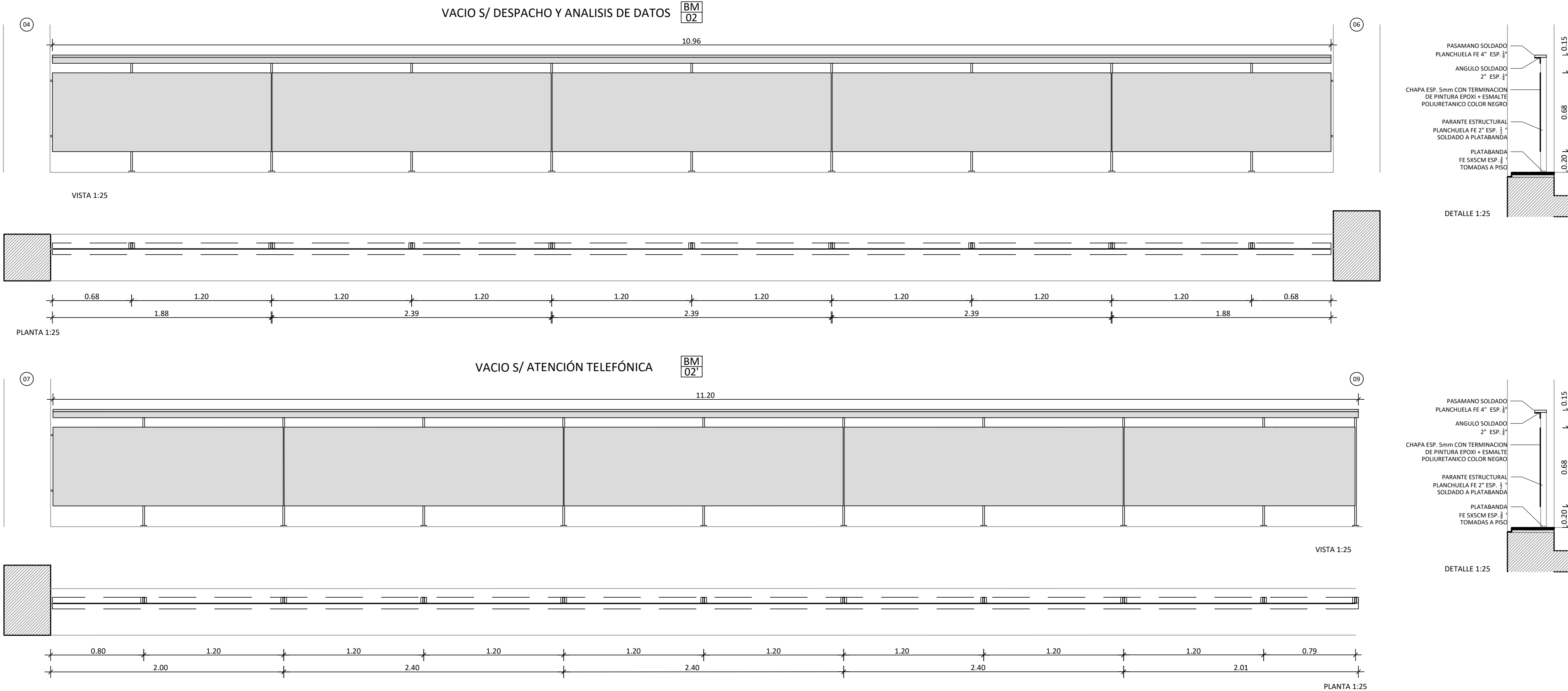
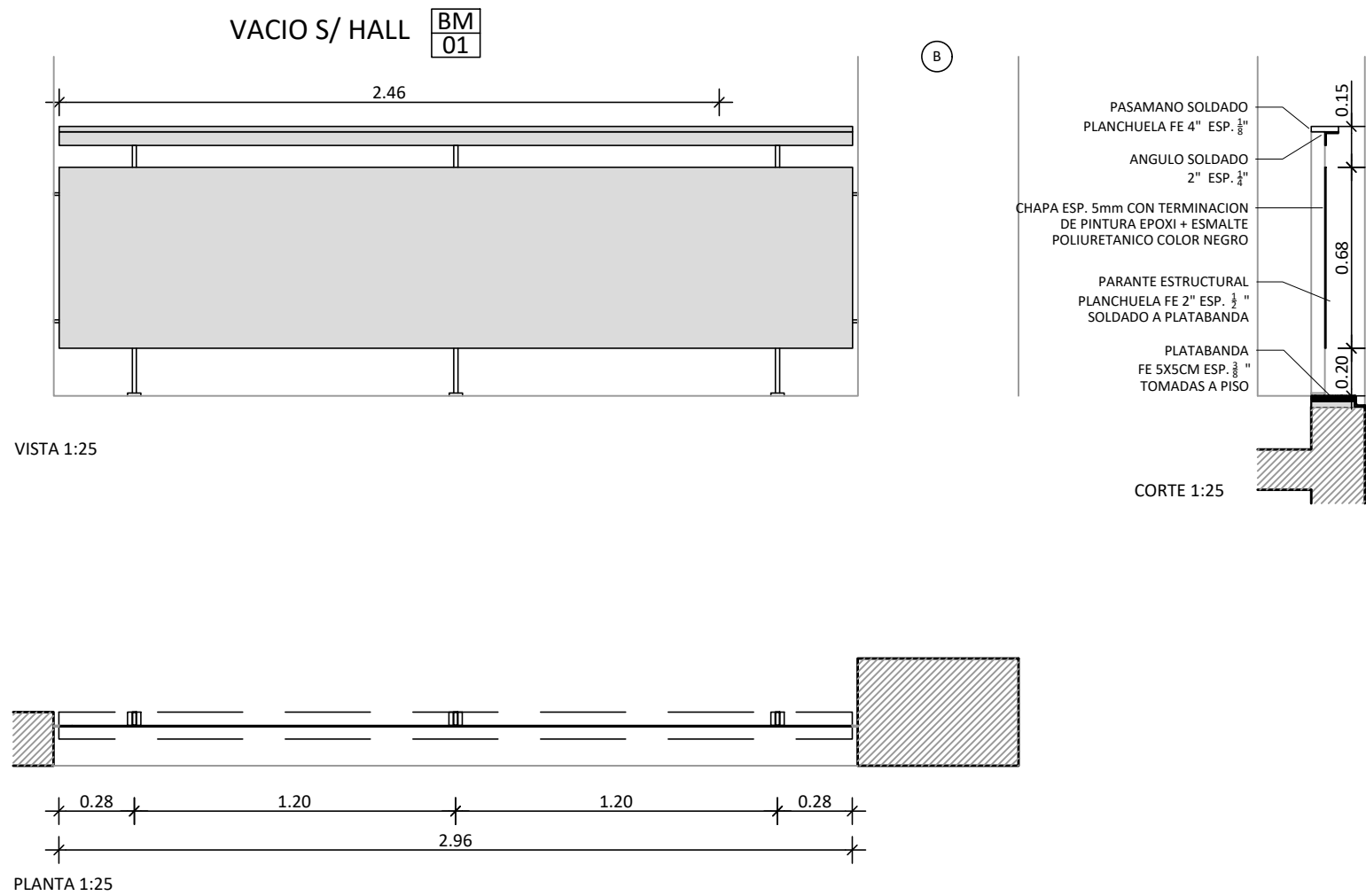


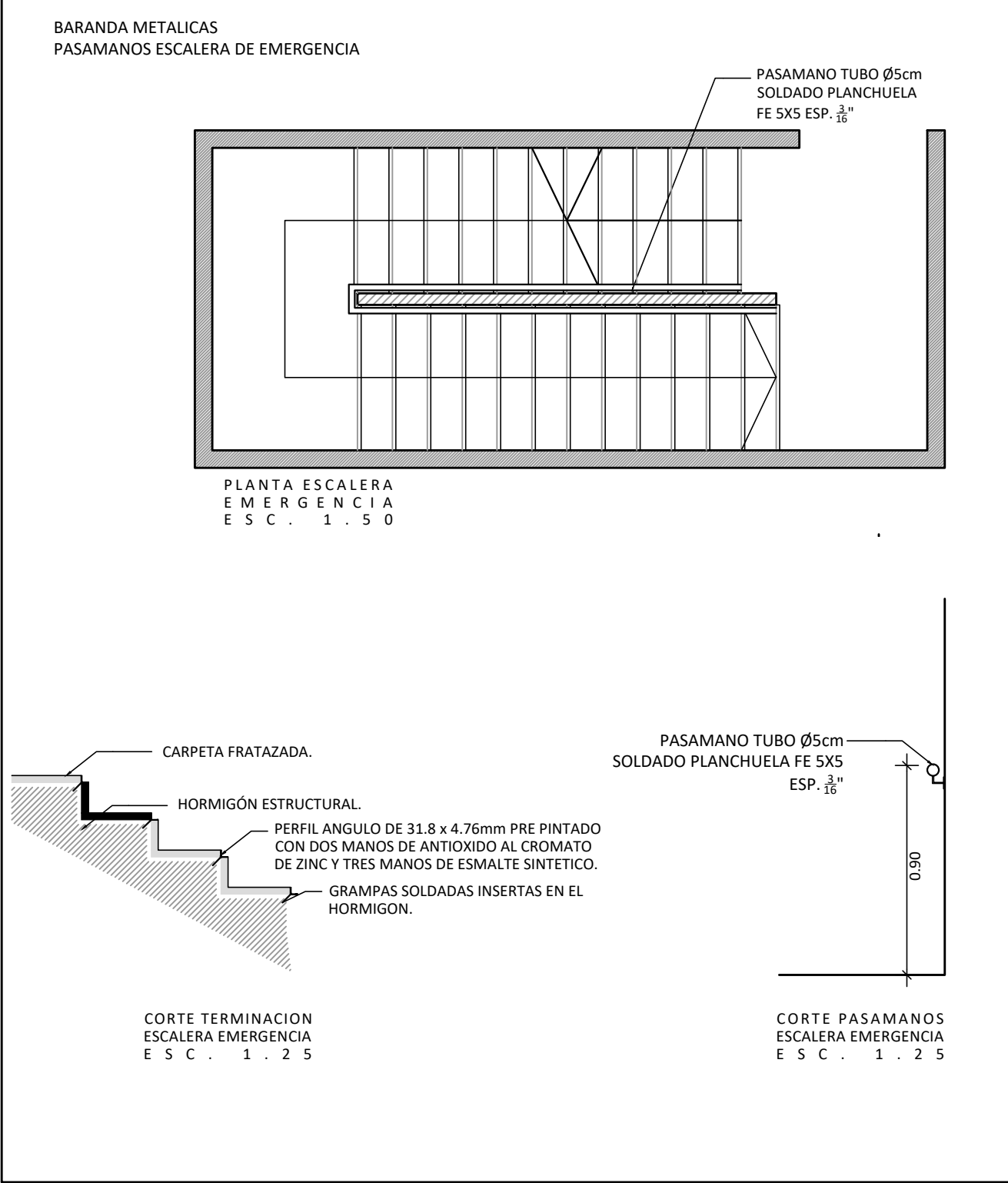
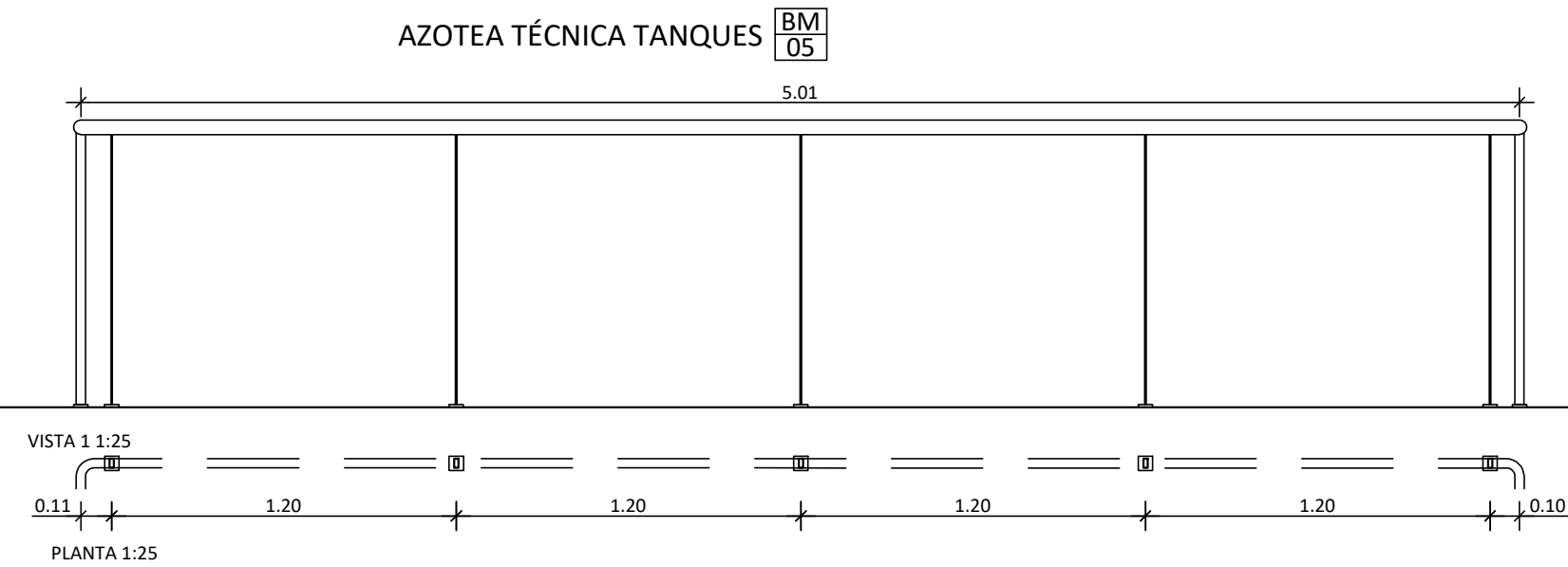
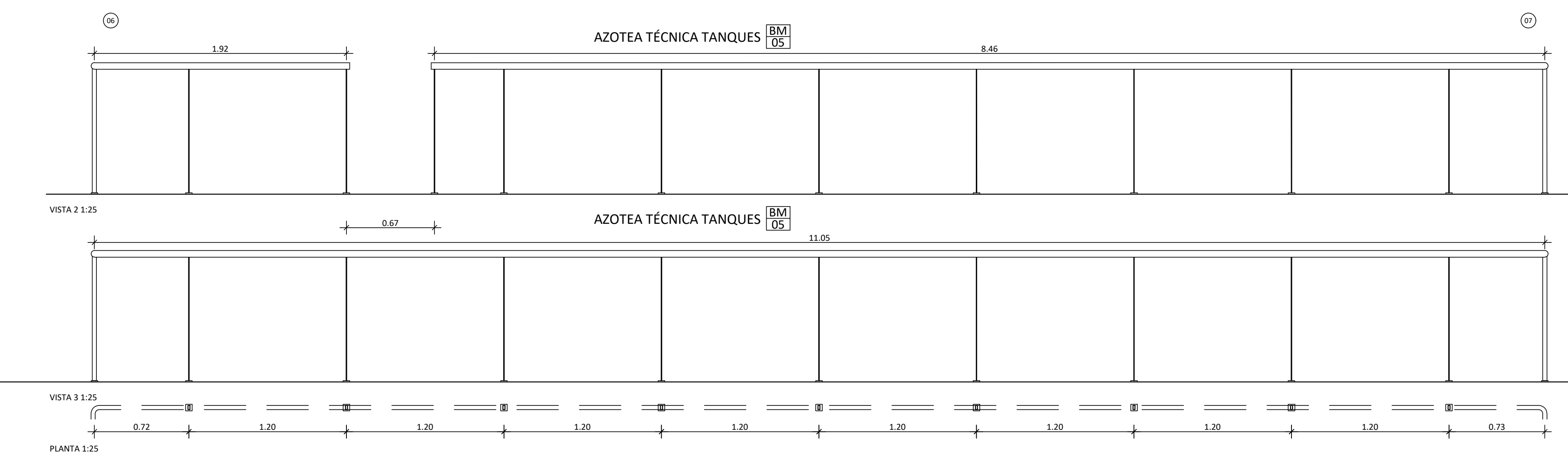
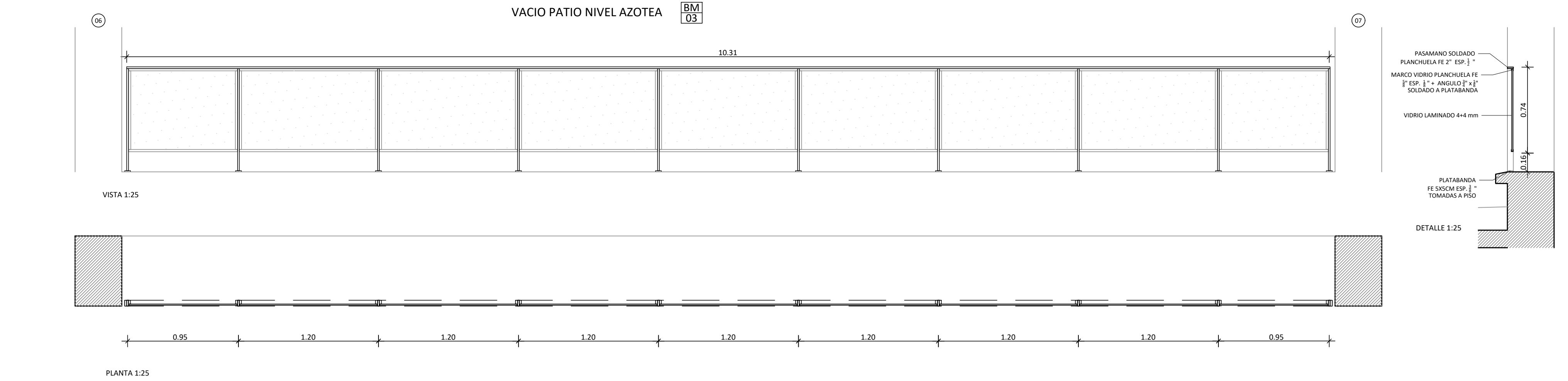
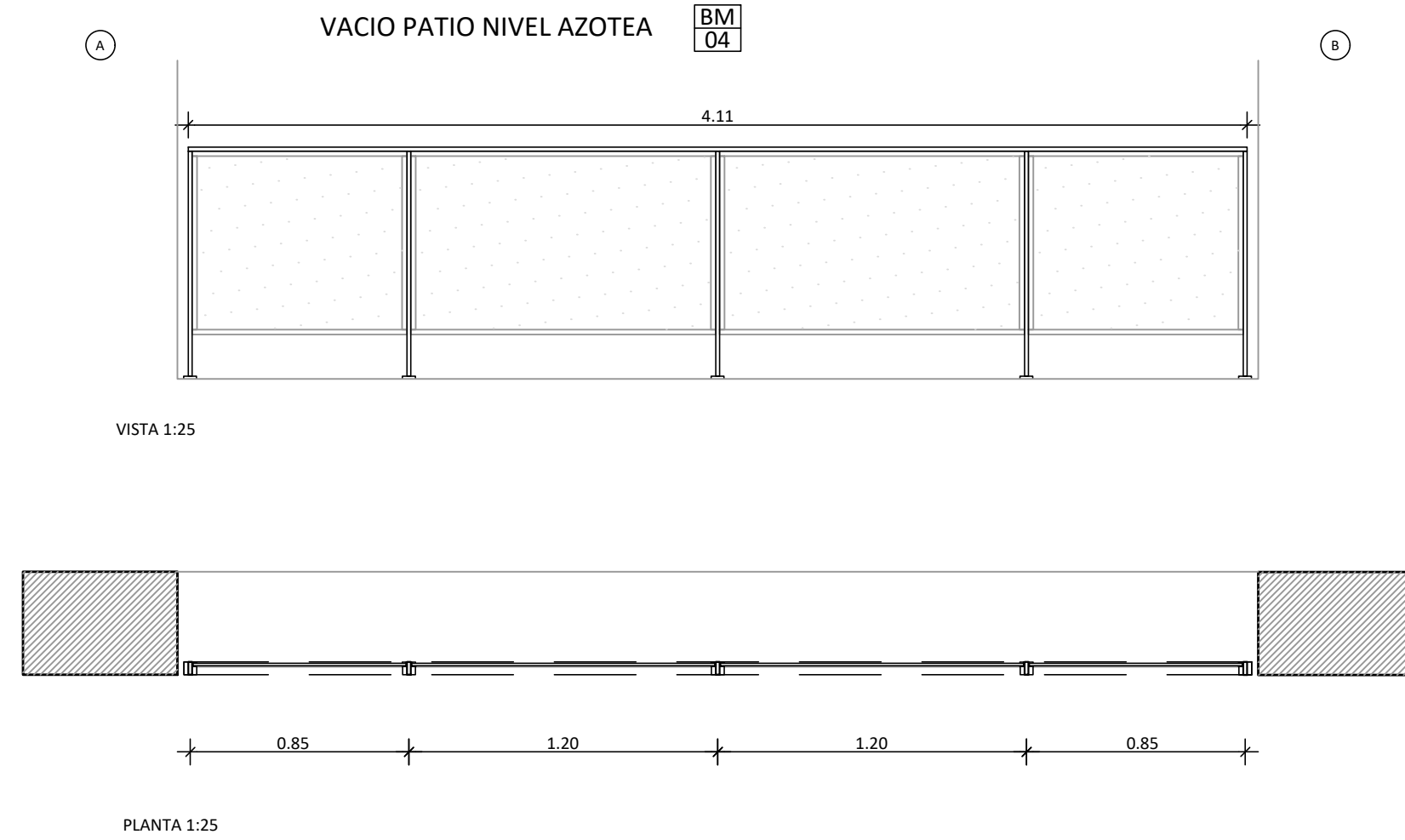
BARANDAS METALICAS


BARANDAS METALICAS INTERIORES 01 / 02



UBICACION BARANDAS

BARANDAS METALICAS EXTERIORES 03 / 04 / 05



	UNIDAD EJECUTORA DE INFRAESTRUCTURA		OBRA 14_EDIFICIO 911
	SUBSECRETARIA TÉCNICA		UBICACION THEDY Y AV. CARBALLO
	ARQ. FRANCISCO QUIJANO		TIPO DESARROLLO BARANDAS
	DIRECCION PROVINCIAL DE OBRAS		PLANO VACIO S/ HALL - S/ ATENCION TEL. - S/ DESPACHO - S/ VACIO PATIO
	ING. FEDERICO ZEGNA RATA		ESCALA: 1:25 FECHA: 11/2025 REVISION: 00
DIRECCION PROVINCIAL DE PROYECTOS		ARQ. JORGE GIUNTA	
SUBDIRECCION GENERAL TÉCNICA		ARQ. VERONICA LANZARO	
		14_911-DE.12	